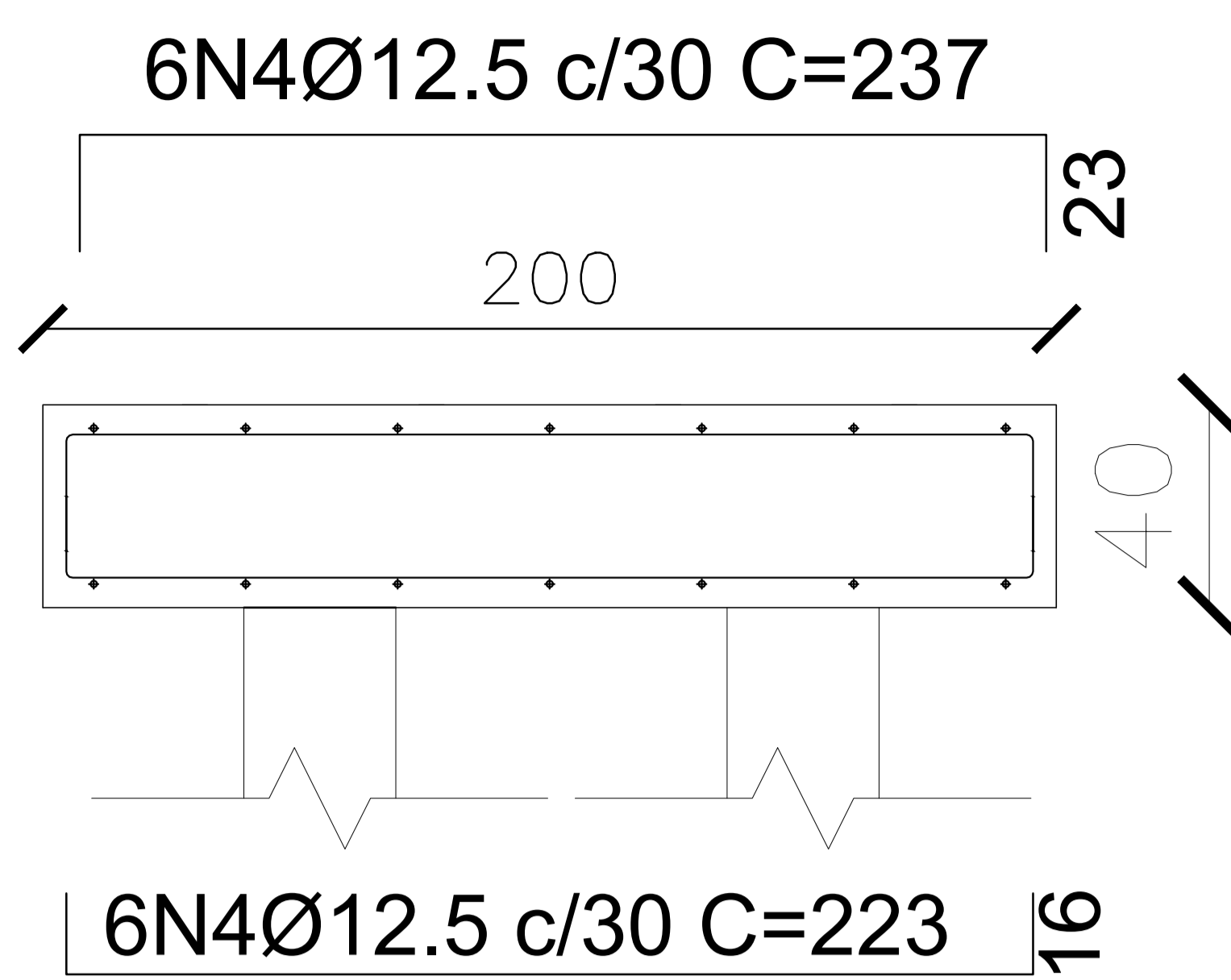
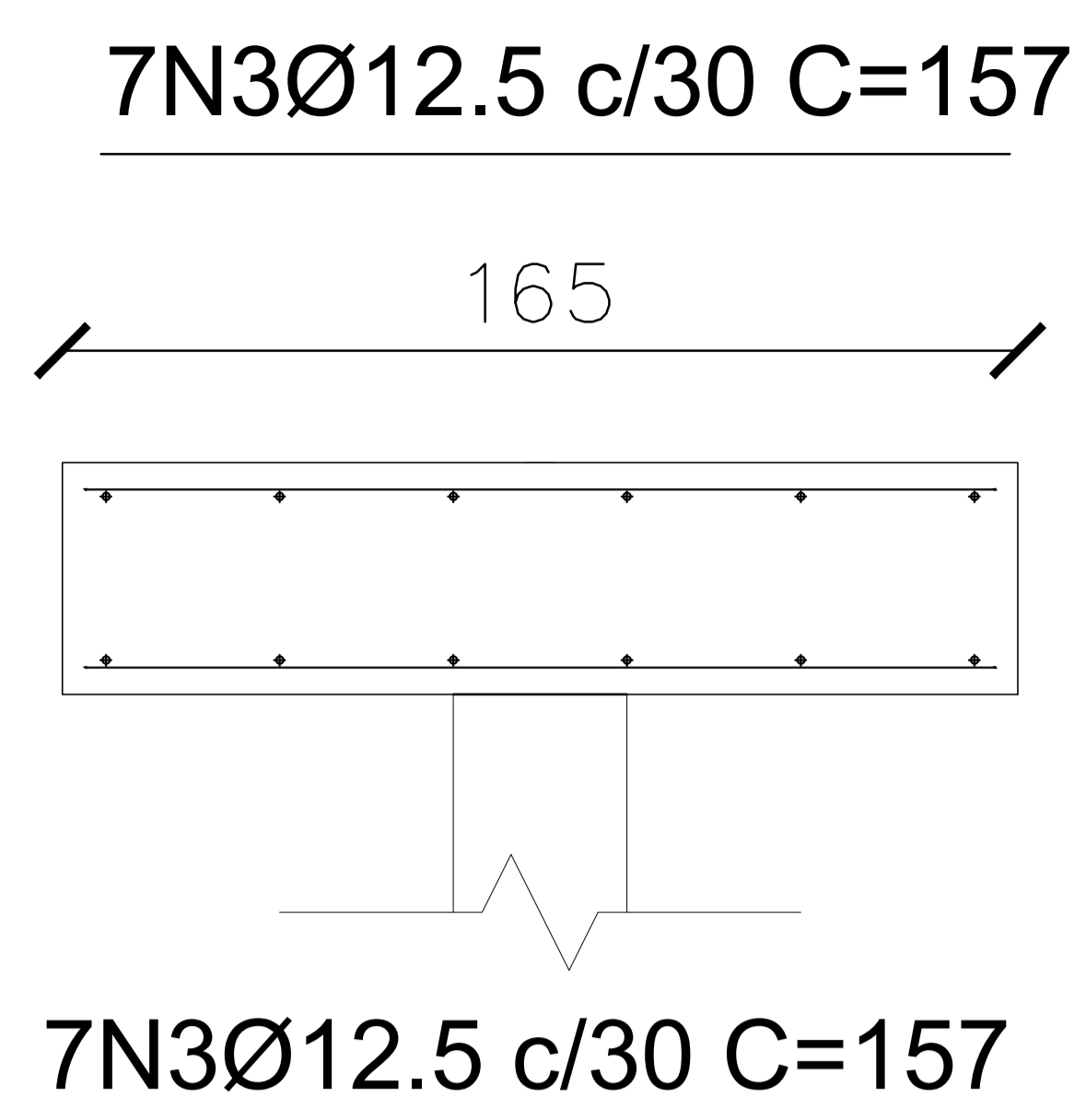
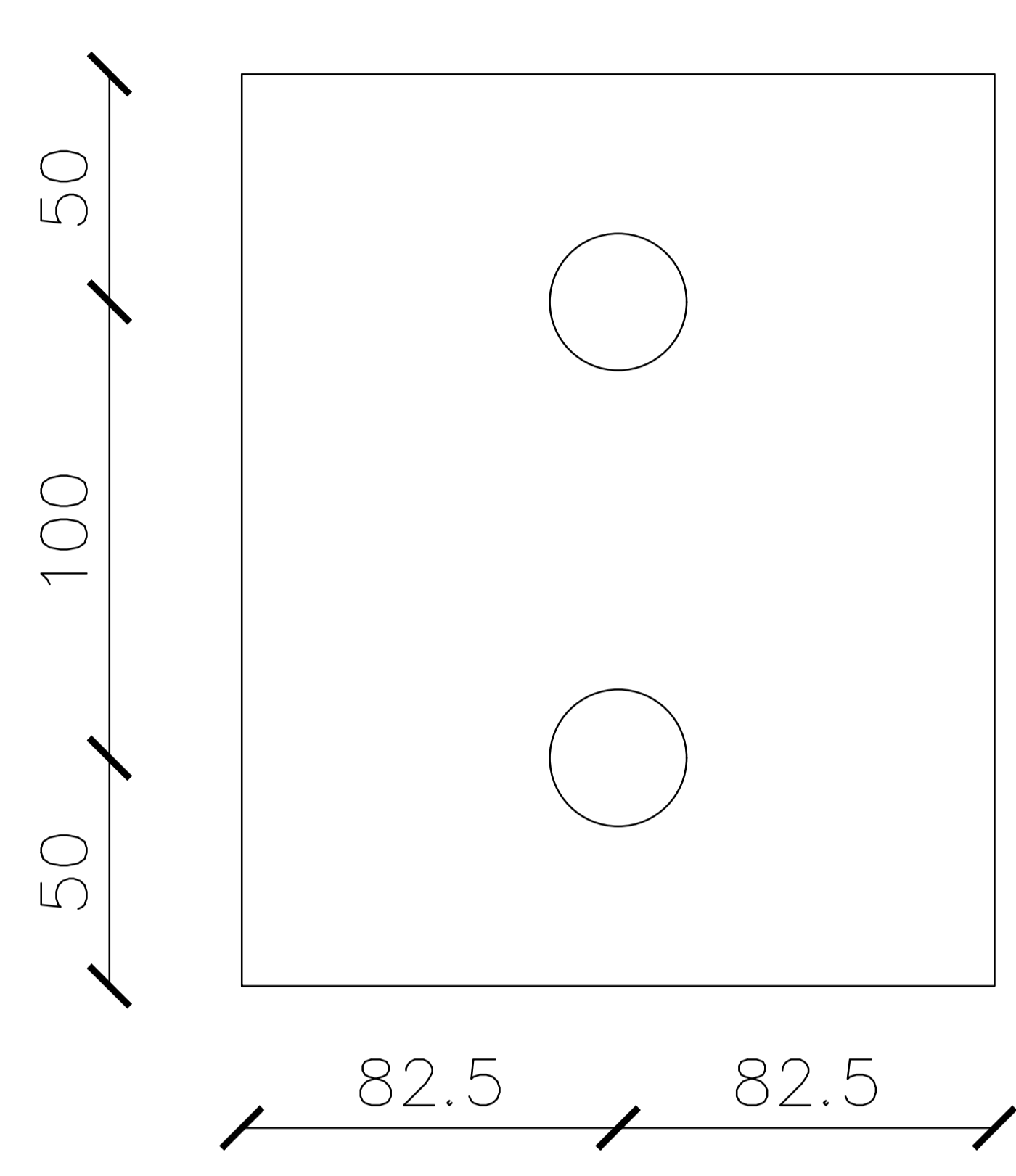
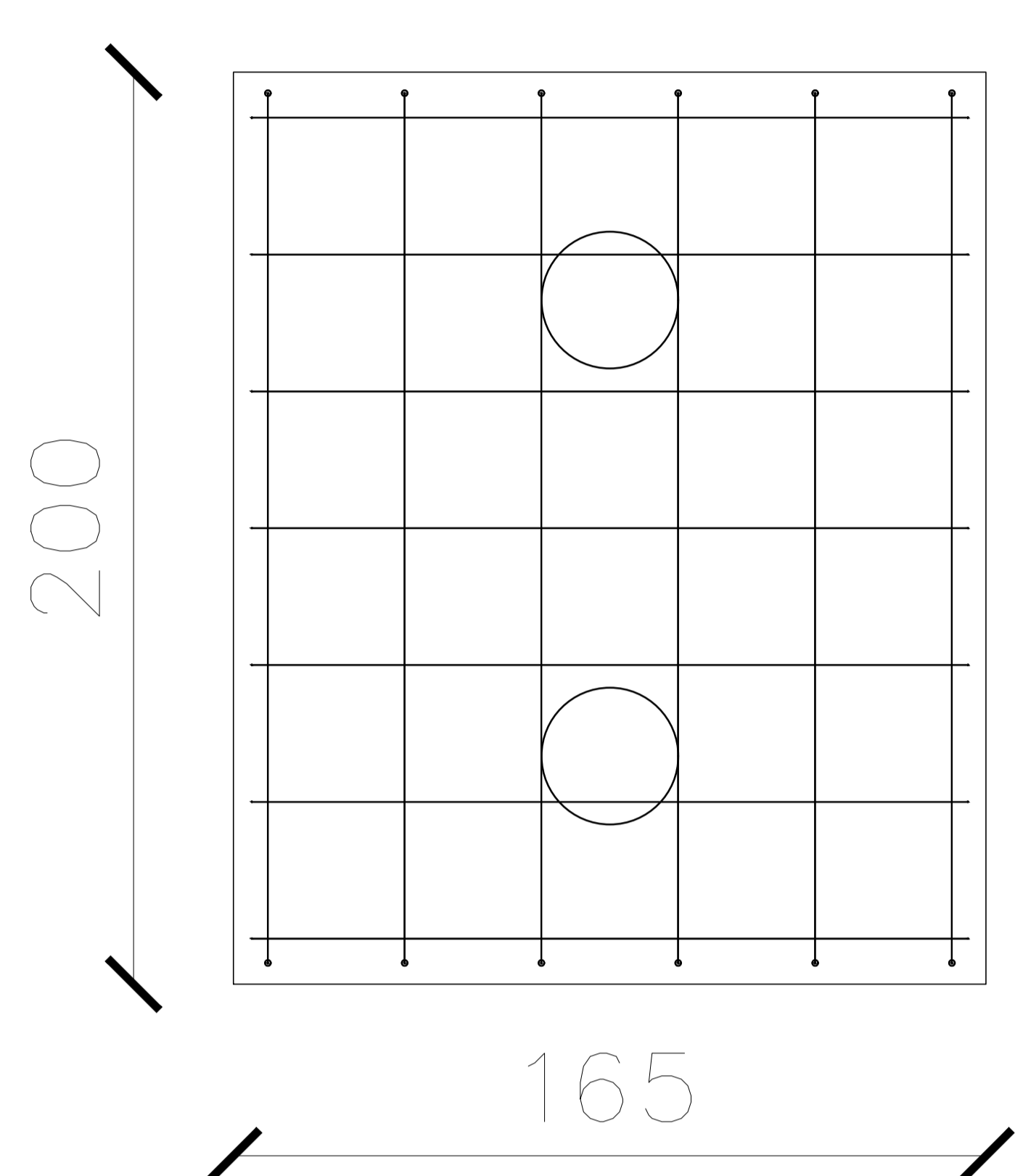
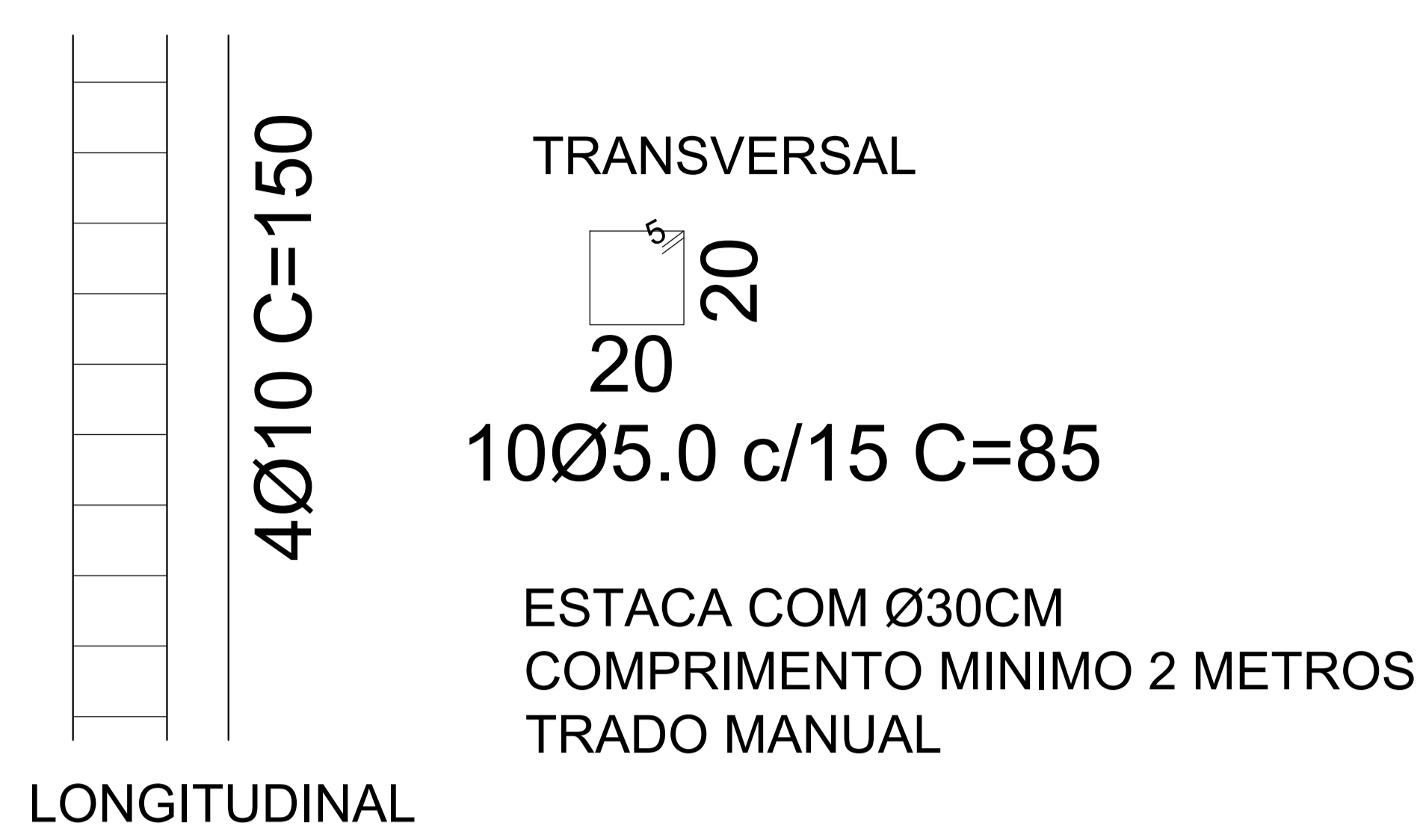


**LADO A:
BLOCO SOBRE ESTACA**



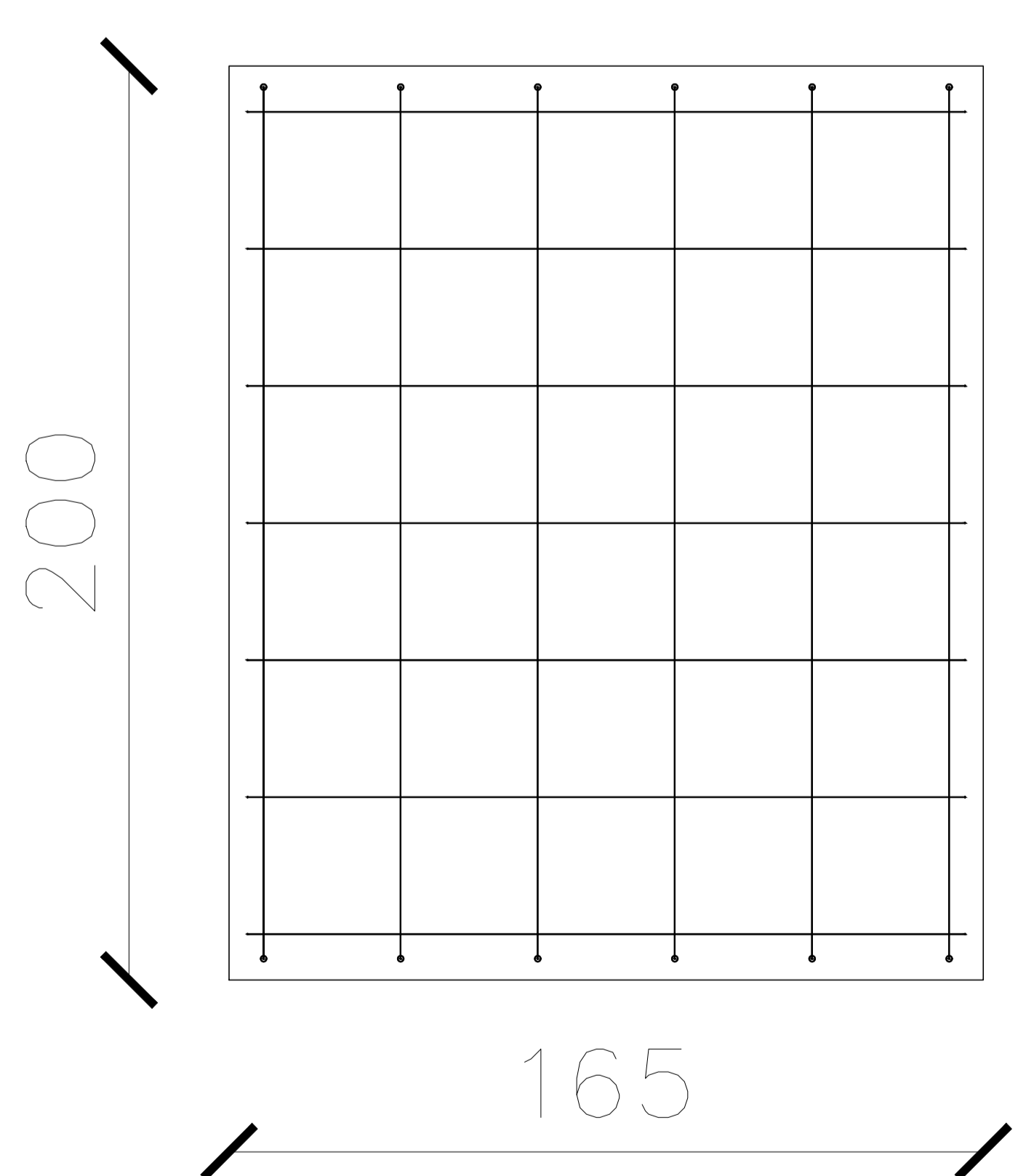
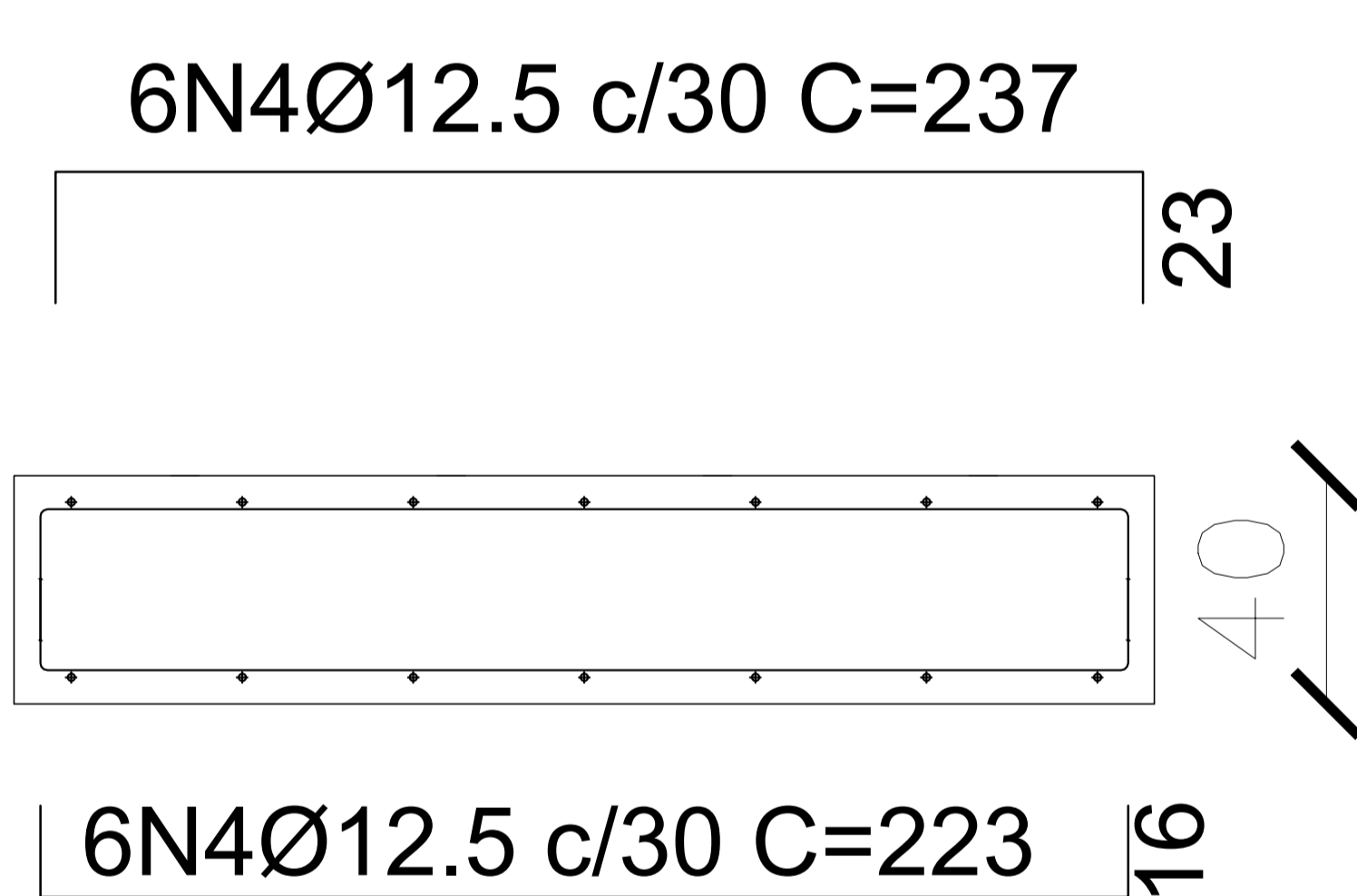
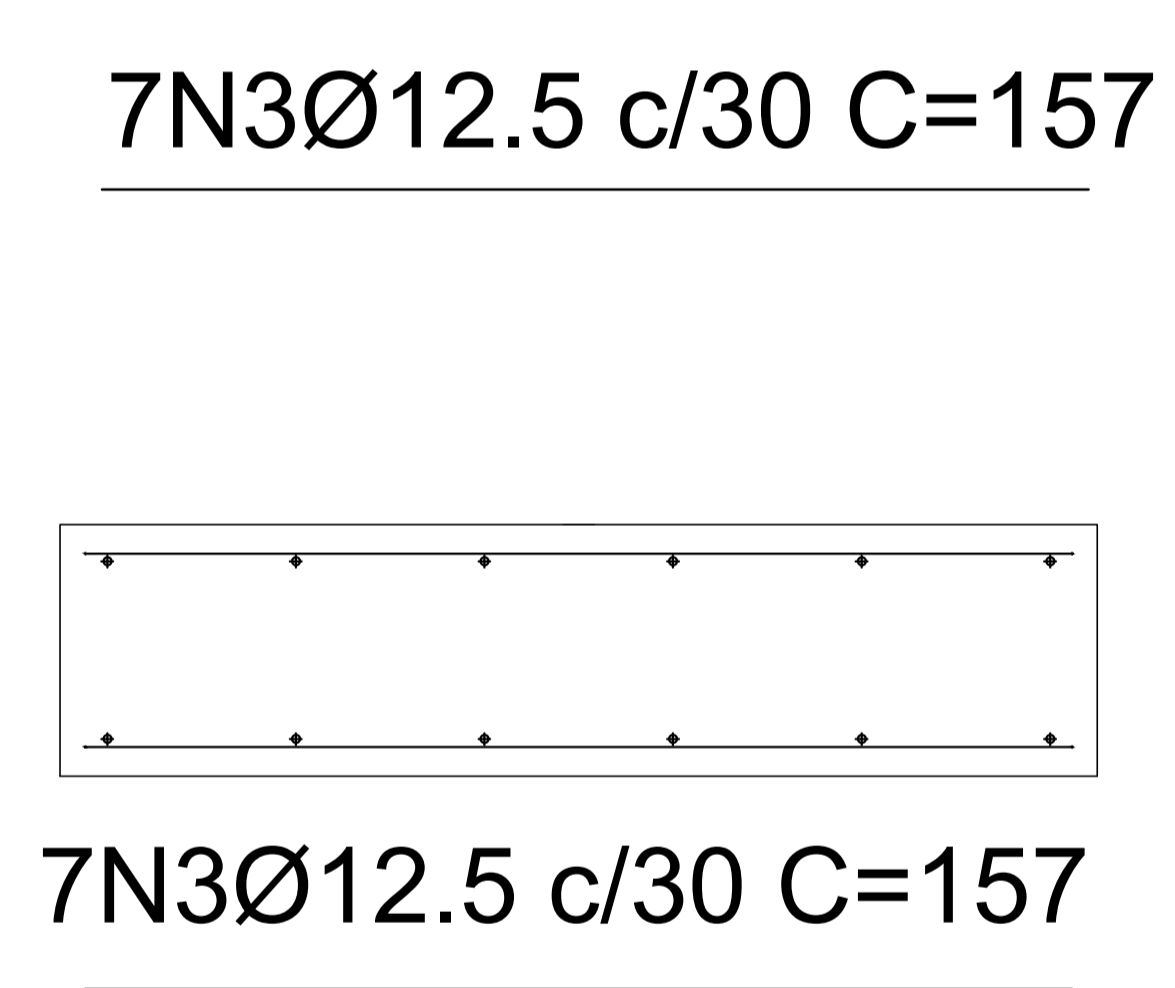
DETALHE ARMADURA DA ESTACA



QUANTITATIVOS = AÇO		
BLOCO A		
Ø	Metros	Kg
Ø 12.5	49,58	47,75
BLOCO B		
Ø	Metros	Kg
Ø 12.5	49,58	47,75
ESTACAS		
Ø	Metros	Kg
Ø 10	12	7,404
Ø 5	17	2,618

RESUMO AÇO			
Ø	Metros	Kg	Total + 10%
Ø 5	17	2,618	2,88
Ø 10	12	7,404	8,1444
Ø 12.5	99,16	95,49	105,04

**LADO B:
SAPATA**



NOTAS = PRANCHA 01



PREFEITURA MUNICIPAL DE ARCO/MG
CNPJ: 18.306.862/0001-50
END: RUA GETULIO VARGAS, Nº 228, CENTRO

CONTEÚDO: PONTE VERTEDOURO PARQUE AQUATICO
FUNDAÇÃO - ARMADURA BLOCO, ESTACA E SAPATA

OBSERVAÇÃO
CONFERIR MEDIDAS NO LOCAL

ENGENHEIRA CIVIL
BÁRBARA RODRIGUES TEIXEIRA
CREA MG215.438/D

DATA
MARÇO/2021

ESCALA
1/50